



A Project by



Sri **JAGATHSWAPNA**
infra projects

The main logo for "Sparrows @ Wrawi" is centered on a white rounded rectangle. It features the word "Sparrows" in a teal, sans-serif font with a stylized teal and black bird-like graphic to its left. Below "Sparrows" is the word "@ Wrawi" in a large, orange, cursive script font, with a stylized orange leaf graphic above the "i".

A Paradise for your family

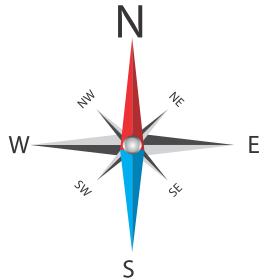
Fully Developed Layout

(Real Site Images)



Layout Plan

TOTAL LAYOUT AREA
6 Acres 20 Guntas



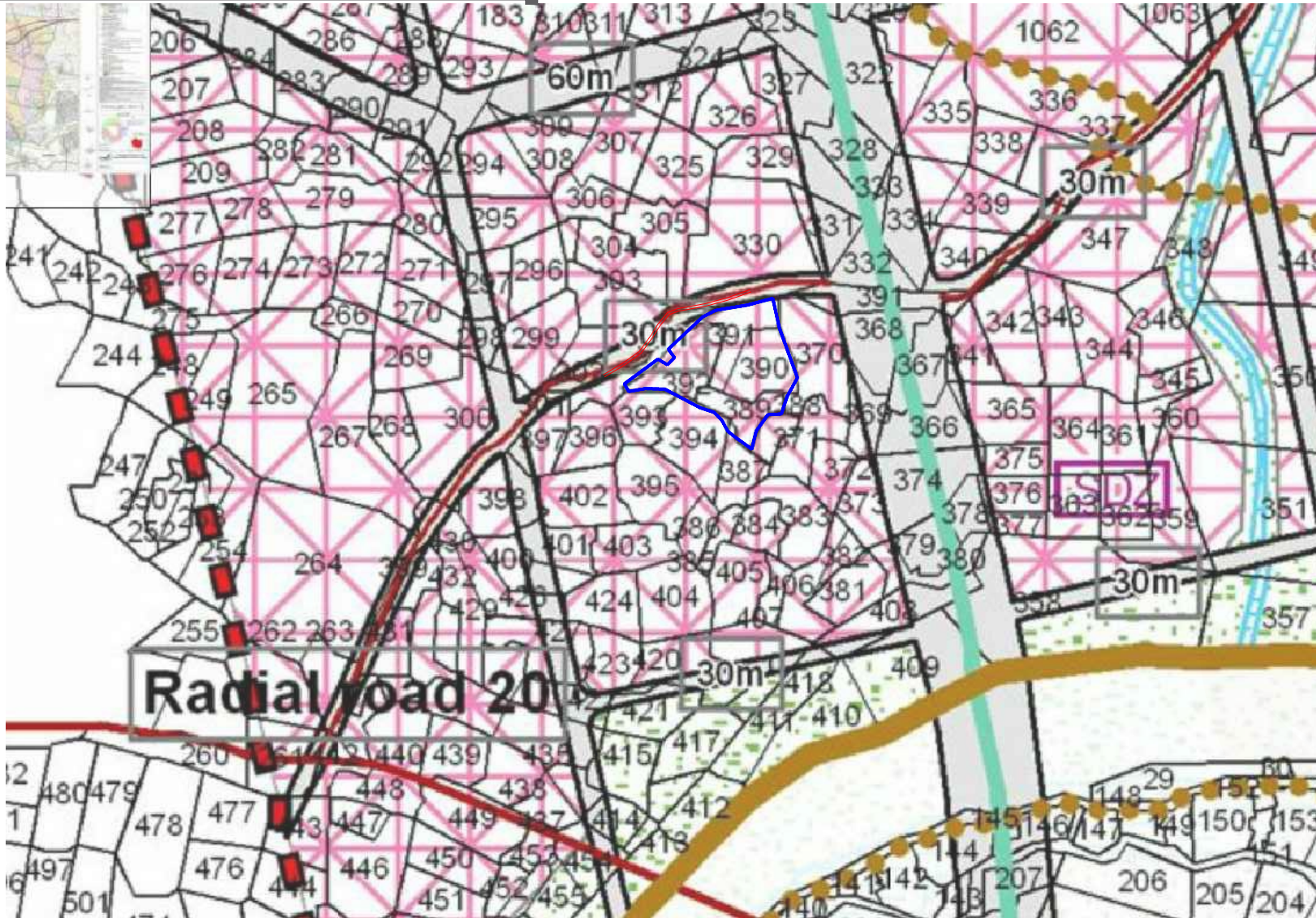
A Project by



Sri
JAGATHSWAPNA
infra projects



Master Plan Road



A Project by



Sri **JAGATHSWAPNA**
infra projects



Location Map

(Not to Scale)



Project Highlights

I. FULLY DEVELOPED LAYOUT

- ▲ Entire Layout as per Vaastu
- ▲ Under GHMC layout
- ▲ 100 FT Mater Plan Layout Road at Entrance
- ▲ X Junction Near Outer Ring Road

II. ENTRANCE ARCH

- ▲ Entire Layout is covered with right round compound wall
- ▲ Entrance Gate with Beautiful Italian Marble Arch
- ▲ 24 Hrs Security

III. ROADS

- ▲ CC Roads

IV. ELECTRICAL

- ▲ Electrification of entire layout with 9.1 mtr poles at 30 mtr / required intervals connected with 55 mm Aluminium conductor 4 lines, 3 for phase and 1 for neutral
- ▲ 100 KV Transformer
- ▲ LED Street lights at required intervals

V. WATER

- ▲ Entire layout covered with 3", 2 ½" and 2" dia underground water pipelines of Sudhakar make with required Gatevalves of ISI make
- ▲ Overhead water tank of 2.5 lac litres capacity
Underground storage sump of 2.5 lac litres capacity

VI. DRAINAGE

- ▲ Underground drainage for entire layout with 6", 8" and 10" sewerage pipes(ISI)
- ▲ 34" Manholes with 24" openings(cover) at required intervals
- ▲ 2 septic tanks of 1.5 lac litres capacity each

VII. PARKS

- ▲ 1850 Sq.Yrds of Park Area
- ▲ Right round compound walls for all parks
- ▲ Children play area with sand pits
- ▲ All parks with landscaping, ornamental / decorative Plants / Trees and lush green lawns

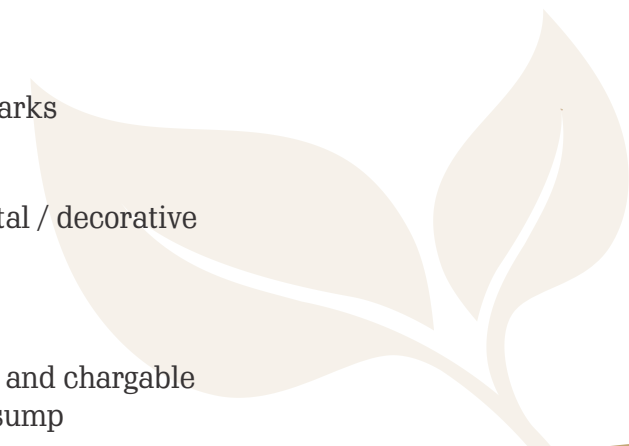
VIII. MAINTENANCE

- ▲ Maintenance starts after registration and chargeable 80,000 litres OHT and under ground sump

A Project by



Sri
JAGATHSWAPNA
infra projects





**A SATISFIED
CUSTOMER
IS THE BEST
BUSINESS
STRATEGY
OF ALL**

Mode of Payments



UPI / TRANSFER



CHEQUES



A Project by



Sri
JAGATHSWAPNA
infra projects





Information



A Project by



Sri **JAGATHSWAPNA**
infra projects



Thank
you